

TFC1000C-4690 AC Source Specifications

The Behlman TFC10000 is a transportable, rugged, precision, three phase 400Hz to three phase 60 Hz frequency converter housed in a stainless steel enclosure suited for outdoor use. The input has a soft start circuit and multi pulse rectification for low input current THD. The output is isolated, neutral may be grounded, and can supply 100% of rated power into any power factor load, zero to unity. The unit has a number of protective circuits including input, short circuit, constant current, and thermal protection. Input and output connections are impervious to weather conditions.

INPUT: 120/208 VAC, 3 phase 360 – 440 Hz.
Multi Pulse Input Transformer for Low Input Current THD.

OUTPUT:

Voltage/Current:	120/208 VAC, 3 phase @ 28 Amps/phase.
Frequency:	60 Hz.
Distortion:	1.5% Typical THD @ 60Hz.
Load Regulation:	±0.7% No Load to Full Load
Line Regulation:	±0.1% for ±10% Line Charge
Efficiency:	85% to 90% at full load.
Power Factor:	100% of rated output into any power factor load.
Current Crest Factor:	3:1



PROTECTIVE CIRCUITS:

Input Protection:	Main circuit breaker.
Constant Current Mode:	Overload automatically causes voltage fold back to provide maximum current without distorting output waveform.
Short Circuit Protection:	Short Circuit electronically latches output open to protect load. Power restored by recycling circuit breaker.
Thermal Protection:	Internal temperature sensor prevents heat damage.

MECHANICAL SPECIFICATIONS:

Enclosure to be high strength 316L stainless steel suited for outdoor use.
Includes mounting angles to allow attaching to a skid.

Dimensions:	22"W X 22"D X 17"H, including heat sink and mounting flanges.
Weight:	275 lbs.
Finish:	CARC paint, color Green, #383 IAW MIL-STD-193L.
Input Connections:	Hubbel No. M5100BR9.
Output Connections:	Hubbel No. M5100R9.

ENVIRONMENTAL:

Operating Temperature:	-32 to 52 degrees C
Non-operating temp:	-40 to 60 degrees C.
Designed to meet:	
MIL-STD-461E:	RE102, CE102, RS103
MIL-STD-810F:	Salt Fog, Humidity, Vibration



World Headquarters

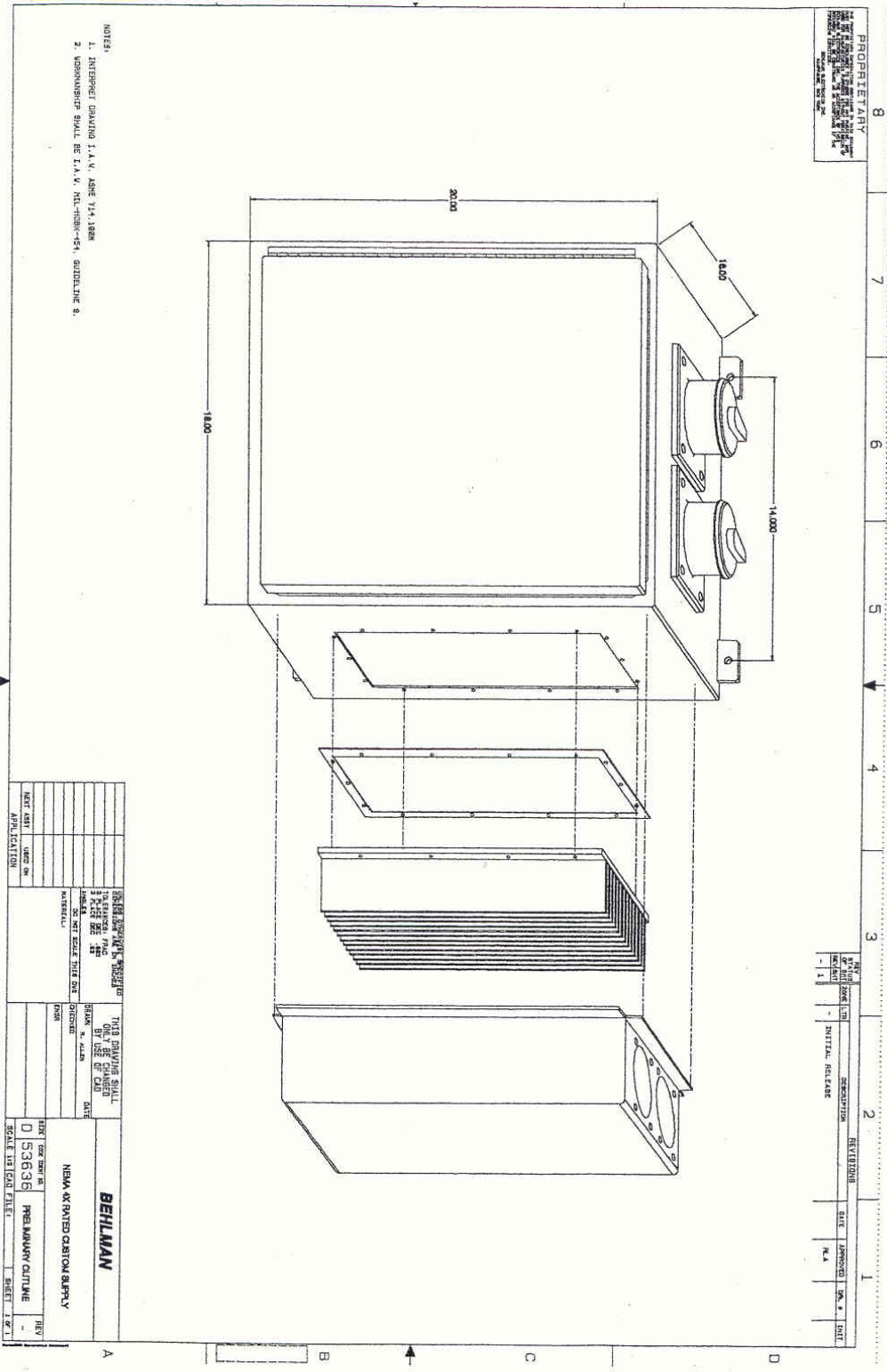
80 Cabot Court Hauppauge, NY 11788
(631)435-0410 (800)874-6727 Fax(631)951-4341

BEHLMAN

e-mail: sales@behlman.com
Web-site: www.behlman.com

West Coast Office

2363 Teller Road Suite 108 Newbury Park, CA 91320
(805)375-70460 (800)456-2006 Fax(805)498-2147



- NOTES:
1. INTERIET DRAWING I.T.A.K. ASME Y14.1888
 2. DIMENSIONS SHALL BE I.T.A.K. N.D. 1086-151, GUIDELINE 8.

PROPRIETARY
 BEHLMAN
 2363 TELLER ROAD SUITE 108 NEWBURY PARK, CA 91320
 (805) 375-70460 (800) 456-2006 FAX (805) 498-2147

REV	DATE	BY	DESCRIPTION	REVISION	SITE	APPROVED	DATE
1			INITIAL RELEASE		N.A.		

THIS DRAWING SHALL BE CHANGED ONLY BY USE OF CAD DRAWN BY: [] CHECKED BY: [] DATE: []		THIS DRAWING SHALL BE CHANGED ONLY BY USE OF CAD DRAWN BY: [] CHECKED BY: [] DATE: []	
MATERIALS		MATERIALS	
NEXT ASSY		NEXT ASSY	
APPLICATION		APPLICATION	
DATE: 05/30/06		DATE: 05/30/06	
BY: []		BY: []	
CHECKED: []		CHECKED: []	
DATE: []		DATE: []	

2/2

World Headquarters
 80 Cabot Court Hauppauge, NY 11788
 (631)435-0410 (800)874-6727 Fax(631)951-4341

BEHLMAN
 e-mail: sales@behlman.com
 Web-site: www.behlman.com

West Coast Office
 2363 Teller Road Suite 108 Newbury Park, CA 91320
 (805)375-70460 (800)456-2006 Fax(805)498-2147

