

## Intelligent Chassis Manager IQCM20- A or B



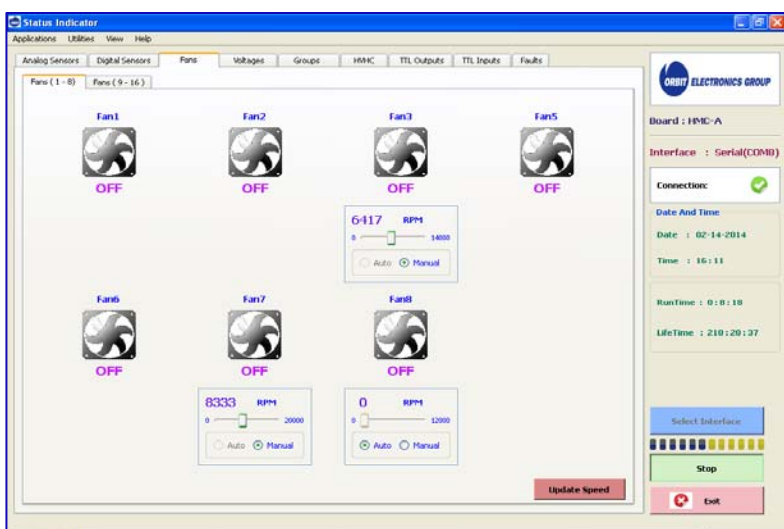
IQCM20-A or IQCM20-B

### FEATURES

- 20 Analog Sensors
- 8 Digital Sensors
- Monitor up to 8 Voltages
- 16 Fan Control
- Simple to use GUI
- Ethernet, USB & RS-232 & RS-422 Interface

Behlman's IQCM20-A or -B is an easy-to-use Intelligent Chassis Manager, an embedded product used to manage and monitor the health of a Chassis/Rack or any electronic enclosure. It is designed to monitor different environmental parameters such as temperature, pressure and humidity. It can also measure various standard and custom voltages. All the monitored values will be displayed on the GUI. The various outputs such as HVHC (Relays) and TTL (LEDs) can be configured and monitored to provide on/off or high/low functions of the various monitored values based on the user requirement. For example, if the temperature is very low inside the chassis, IQCM can activate a heater in order to maintain the temperature inside the chassis. It can also illuminate an LED that provides a low temperature alert to the user. It also includes the ability to monitor fans or pumps and it can control (four wire version) the speed of the fans in conjunction with the various environmental parameters as configured by the user.

Software is a GUI based application which allows the user to configure the IQCM20 and to display the status of the system parameters; sensors, fans, pumps, power supply voltages, etc...



Sample of user-friendly Graphical User Interface for fan configuration and status. Manual "on-the-fly" adjustments are available for system development. Auto-mode enables a wide variety of fan grouping options and sensor-fan relationship configurations.

## Hardware Specifications

SI.NO	FEATURES	ADVANCED VERSION (A)	BASIC VERSION (B)
<b>Interface</b>			
1	No. of Analog sensors	4 onboard Temp sensors + 16 external	1 onboard Temp sensor + 8 external
2	No. of Digital sensors	8	8
3	No. of Fans (2 ,3 & 4 wire)	16	8
4	HVHC Outputs	8	4
5	TTL Outputs	16	8
6	TTL Inputs	4	4
7	LCD (Alphanumeric)	Yes	Yes
8	RS 422	1	1
9	RS 232	2	2
10	USB 2.0	1	1
11	Ethernet 10/100	1	1
12	Micro SD Card	1 SLOT	1 SLOT
13	Voltage Monitoring	8 Inputs (+3.3V, +5V, +12V, -12V + four user defined positive voltages from 0V to 28V)	4 Inputs (+3.3V, +5V, +12V, -12V)
14	Buzzer interface	Yes	Yes
<b>Communication</b>			
15	Communication to PC	RS 232, Ethernet, USB	RS 232, Ethernet, USB
<b>Electrical</b>			
16	Input Voltage	5VDC to +30VDC	+5VDC to +30VDC
<b>Environmental</b>			
17	Operating Temperature	-40°C to +85°C	-40°C to +85°C
18	RoHS Compliant	Yes	Yes
19	Dimensions	80mm x 120mm x 20mm (3.15" x 4.73" x 0.787")	80mm x 120mm x 20mm (3.15" x 4.73" x 0.787")
<b>GUI Interface</b>			
20	User configurable	Yes	Yes
21	Automatic Configuration	Yes	Yes
22	Password protection	Yes	Yes
23	Field upgradable	Yes	Yes
24	Data logging	Yes	Yes
<b>Other Features</b>			
25	Real Time Clock	Resettable	Resettable
26	Run Time clock	Non-Resettable	Non-Resettable
27	Life Time clock	Resettable[Hardware]	Resettable[Hardware]
28	EEPROM	64KB	64KB
29	Indication of Failure of IQCM20	Yes	No

