

VPXtra® 500M1

FEATURES

- Open VPX VITA 62 compatible
- Wide input range
- High power DC output
- Efficiency of 90% typical
- Conduction cooled at card edge
- Conformal coating on PWA
- Remote Sense for VS1, VS2 & VS3



3U Open VPX VITA 62 compatible High Power Multi-Output Power Supply

The Behlman VPXtra®500M1 COTS DC to DC power supply is a rugged, highly reliable, conduction cooled, switch mode unit built for high-end industrial and military applications. The VPXtra®500M1 is a VITA 62, Open VPX compatible, 3U power supply that delivers 460 Watts of DC power via six outputs. The main outputs can be paralleled for higher power. The VPXtra®500M1 can accept a 28 VDC input, IAW MIL-STD-704, and can supply a high power DC output at various power levels.

The VPXtra®500M1 power supply has no minimum load requirement and has overvoltage and short circuit protection as well as over current and thermal protection. The power supply is designed to support the rigors of mission critical airborne, shipboard, vehicle and mobile applications.

Designed and manufactured with *Xtra-Cooling*, *Xtra-Reliable Design* and *Xtra-Rugged* construction makes the Behlman VPXtra®500M1 your best choice.

INPUT

Voltage: 18 to 36 VDC

OUTPUT

Power: 460 Watts

Voltage/Current:

VS1 5 VDC +/- 1% @ 40 Amps
VS2 3.3 VDC +/- 1% @ 15 Amps
VS3 5 VDC +/- 1% @ 40 Amps
Auxiliary: 3.3 VDC +/- 1% @ 1 Amp
Auxiliary: -12 VDC +/- 1% @ 0.375 Amps
Auxiliary: +12 VDC +/- 1% @ 0.375 Amps

Line Regulation: 0.5% maximum

Load Regulation: 2.0% maximum (0-100%)

PARD-Ripple & Noise: 50mV p-p (0-20 MHz) for 3.3V and 5V outputs.
120mV p-p for +12/-12V auxiliary outputs.

Efficiency: 90% typical, 50-100% load

PROTECTIVE CIRCUITS

Over Voltage: 120% typical
Over Current: 120% typical
Short Circuit: Automatic recovery
Over Temp: Shutdown

CONTROLS (IAW VITA 62)

Inhibit: Output Off- active low
Enable: Input On- active low

INDICATOR

DC STATUS LED: Bi-color LED (Red/Green)

GENERAL CHARACTERISTICS

Isolation:

Input to Output: 500 VDC

Input to Case: 500 VDC

Output to Case: 500 VDC

MTBF: 1,100,000hrs G_b @ 50°C,
IAW MIL HDBK-217F Notice 2

ENVIRONMENTAL

Temperature at card edge (IAW VITA 47)

Operating: -40°C to +85°C

Storage: -55°C to +105°C

MECHANICAL (1.0 inch pitch)

See O&C drawing 24180 for connector details and pin assignment

Dimensions: 3.94"W x 6.63"L x .97"H

Weight: 1.8 lbs.

Connector: TE P/N: 6450839-7

COMPLIANCE

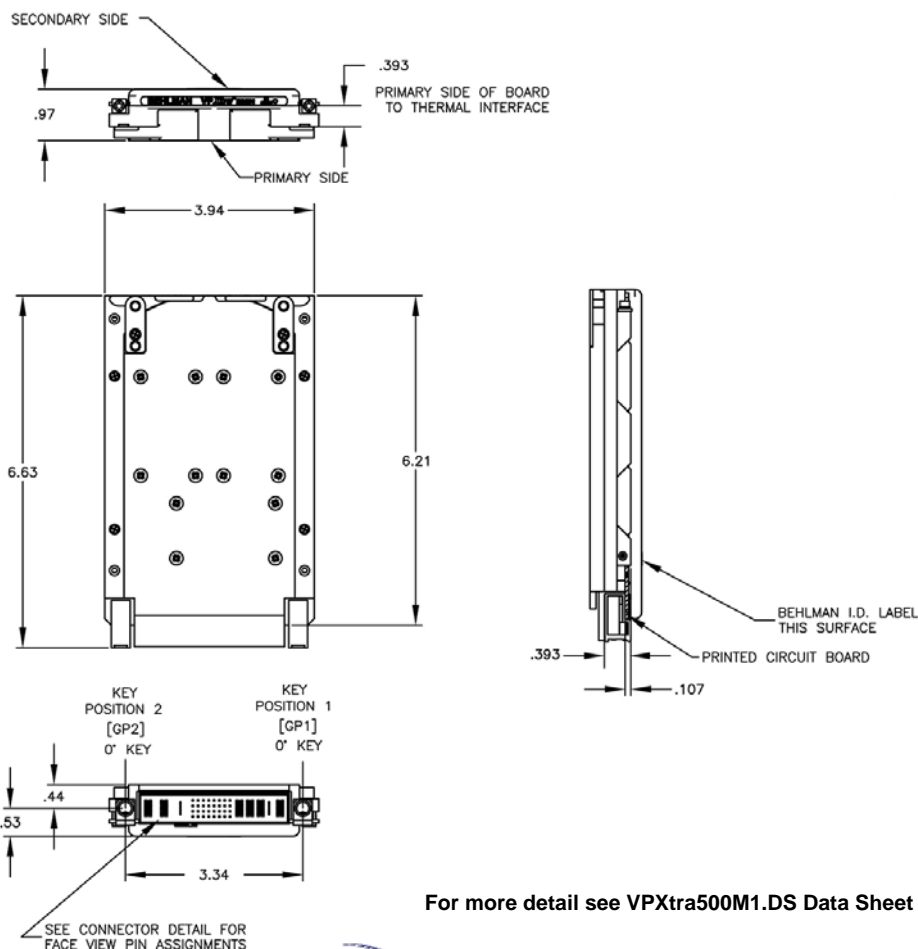
EMI (MIL-STD-461): CE102

Designed to meet the following:

Shock: VITA 47 Class OS2

Vibration: VITA 47 Class V3

Humidity: VITA 47



For more detail see VPXtra500M1.DS Data Sheet



VITA Member

www.behlman.com

ORBIT POWER GROUP
Behlman Electronics

Headquarters:
80 Cabot Court, Hauppauge, NY 11788
631 435-0410 800 874-6727
Fax: 631 951-4341

sales@behlman.com

