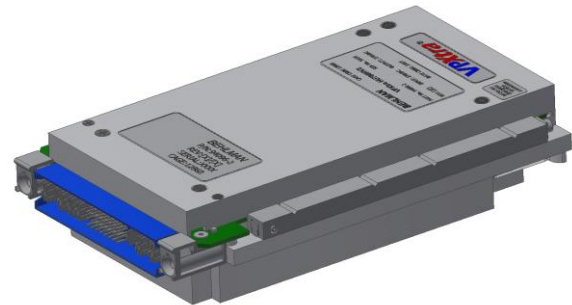


# VPXtra® HU700HV2

## 3U Accessory Hold-Up Card for VPXtra®800B

### FEATURES

- Wide Input Range
- High Power DC Output
- 80 msec Hold-up for 950W<sup>†</sup> when used in conjunction with VPXtra®800B
- Conduction Cooled at Card Edge
- Conformal Coating on PWA



The Behlman VPXtra®HU700HV2 COTS Hold-Up card is a rugged, highly reliable, conduction cooled, unit built for high-end industrial and military applications. The VPXtra® HU700HV2 is a 3U hold-up card expressly designed for use with Behlman's VPXtra®800B power supply to supply sufficient energy storage to hold-up 950W<sup>†</sup> of DC power for 80 msec as specified by MIL-STD-704.

The power supply is designed to support the rigors of mission critical airborne, shipboard, vehicular and mobile applications.

Designed and manufactured with *Xtra-Cooling*, *Xtra-Reliable* Design and *Xtra-Rugged* construction makes the Behlman VPXtra®HU700HV2 your best choice.

### INPUT

<b>Voltage:</b>	270 VDC (230-310 VDC) <b>Designed to meet the input power transients of MIL-STD-704 (A to F)</b>
<b>Grounding:</b>	All input and output terminals (excluding the designated Chassis GND terminal) are isolated from the metal enclosure

### HOLD-UP

<b>Power:</b>	950 Watts <sup>†</sup>
<b>Time:</b>	80 msec <sup>†</sup>
<b>Charge Time:</b>	500 msec maximum from initial application of source power
<b>Discharge Time:</b>	Voltage at output pins shall be 30V or lower no more than 30 seconds after removal of source power

### INDICATOR

<b>Charge Status:</b>	Bi-color LED (Red/Green)
-----------------------	--------------------------

### GENERAL CHARACTERISTICS

<b>Isolation:</b>	
<b>Input to Output:</b>	1000 VDC
<b>Input to Case:</b>	1000 VDC
<b>Output to Case:</b>	1000 VDC
<b>MTBF:</b>	1,668,117hrs G <sub>F</sub> @ 55°C, IAW MIL HDBK-217F Notice 2

### ENVIRONMENTAL COMPLIANCE

(IAW VITA 47.1 Class ECC4SL1)

<b>Temperature</b>	
<b>Operating:</b>	-40°C to +85°C
<b>Storage:</b>	-55°C to +105°C
<b>Altitude:</b>	-1,500 to +70,000 ft.

### Designed to meet the following:

<b>Humidity:</b>	VITA 47.1, up to 95% RH
<b>Salt Fog:</b>	VITA 47.1, Class SL1
<b>Shock:</b>	VITA 47.1 Class OS2
<b>Vibration:</b>	VITA 47.1 Class V3
<b>EMI:</b>	MIL-STD-461G (Aircraft)

For more details see VPXtra®800B Data Sheet

<sup>†</sup> Assumes 115/200VAC or 270VDC source voltage IAW MIL-STD-704F applied to VPXtra®800B power supply; contact factory for characteristics at other source voltages.

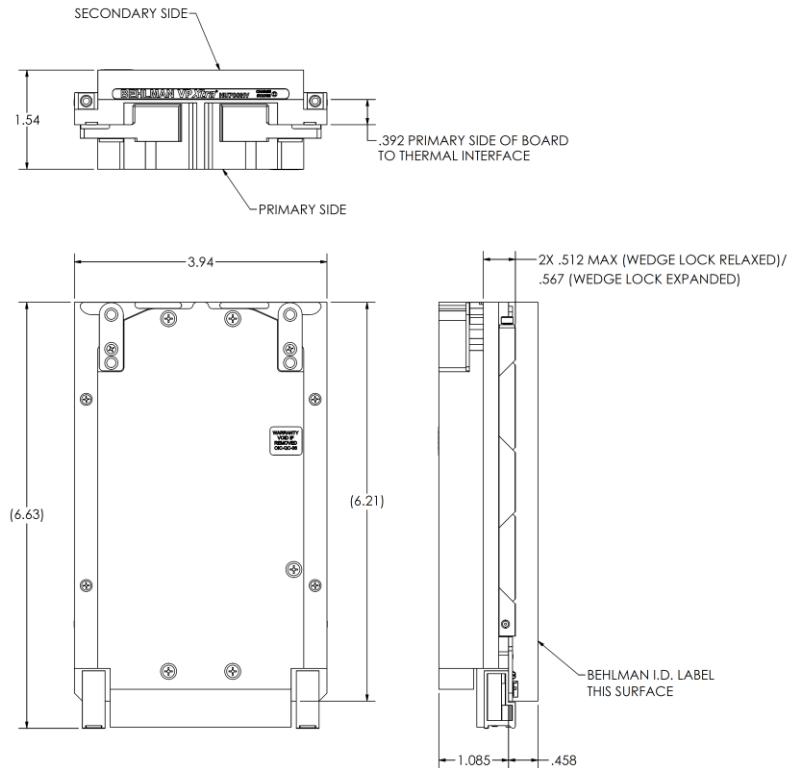
### MECHANICAL (1.6 inch pitch)

See O&C drawing OC94096-2 for connector details and pin assignments

**Dimensions:** 3.94"W x 6.63"L x 1.54"H

**Weight:** 2.50 lbs. max

**Mating Connector:** TE Connectivity 2313441-1 or similar IAW VITA 62.2



SEE CONNECTOR DETAIL FOR FACE VIEW PIN ASSIGNMENTS

VPXtra® is a registered trademark of Behlman Electronics. The VPX logo and related marks are trademarks of VITA.



VITA Member

[www.behlman.com](http://www.behlman.com)



Headquarters:  
80 Cabot Court, Hauppauge, NY 11788  
631 435-0410 800 874-6727  
Fax: 631 951-4341

[sales@behlman.com](mailto:sales@behlman.com)

